

The following information changes the RFT documents issued on Tuesday March 4, 2025.

CLOSING DATE CHANGE

Change of closing date to Thursday, March 27, 2025, on or before 2:00:00 PM local time.

GENERAL INFORMATION

Item 1: Refer to RFT Document, Introduction and Project Details
REMOVE and REPLACE Section 1.5 Project Schedule with below:

1.5 PROJECT SCHEDULE

- .1 The Successful Bidder will adhere to section GC 3.4 in regard to milestone dates set below.
- .2 The following are Project milestone dates:

a) Tender Issued	Tuesday, March 4, 2025
b) Site Walkthrough at 11:00 am	Monday, March 10, 2025
c) Closing for Questions	Thursday, March 12, 2025
d) Tender Closing at 2:00:00 PM	Thursday, March 27, 2025
e) Anticipated Construction Commencement	Monday, June 30, 2025
f) Substantial Performance of the Work	Friday, August 22, 2025
g) Ready-for-Takeover	Monday, September 1, 2025
- .3 Any Work remaining after the Substantial Performance of the Work date will need to be completed after-hours and weekends and cannot be disruptive to the school and operations of the school in any way.

Item 2: Refer to 'Lisgar Renovations ADD #2 03-19-25.pdf' dated Wednesday March 19, 2025, issued by Richard J Butterworth (3 pages).

QUESTIONS AND RESPONSES

Q1 On drawing A2.01 partial ground floor plan shows 3 Wenger #76 and 1 Wenger #73. Are these to be included in base bid? There is no mention of these cabinets anywhere else, please advise if they are to be supplied and installed under this tender?

R1 Refer to General Information Item 2.

End of Addendum #3

ADDENDUM

No. 2

PROJECT: HWDSB Lisgar Elementary School Washroom Renovations

DATE:03/19/25

PROJECT No.: 24-105

The following addendum shall be incorporated into the contract documents:

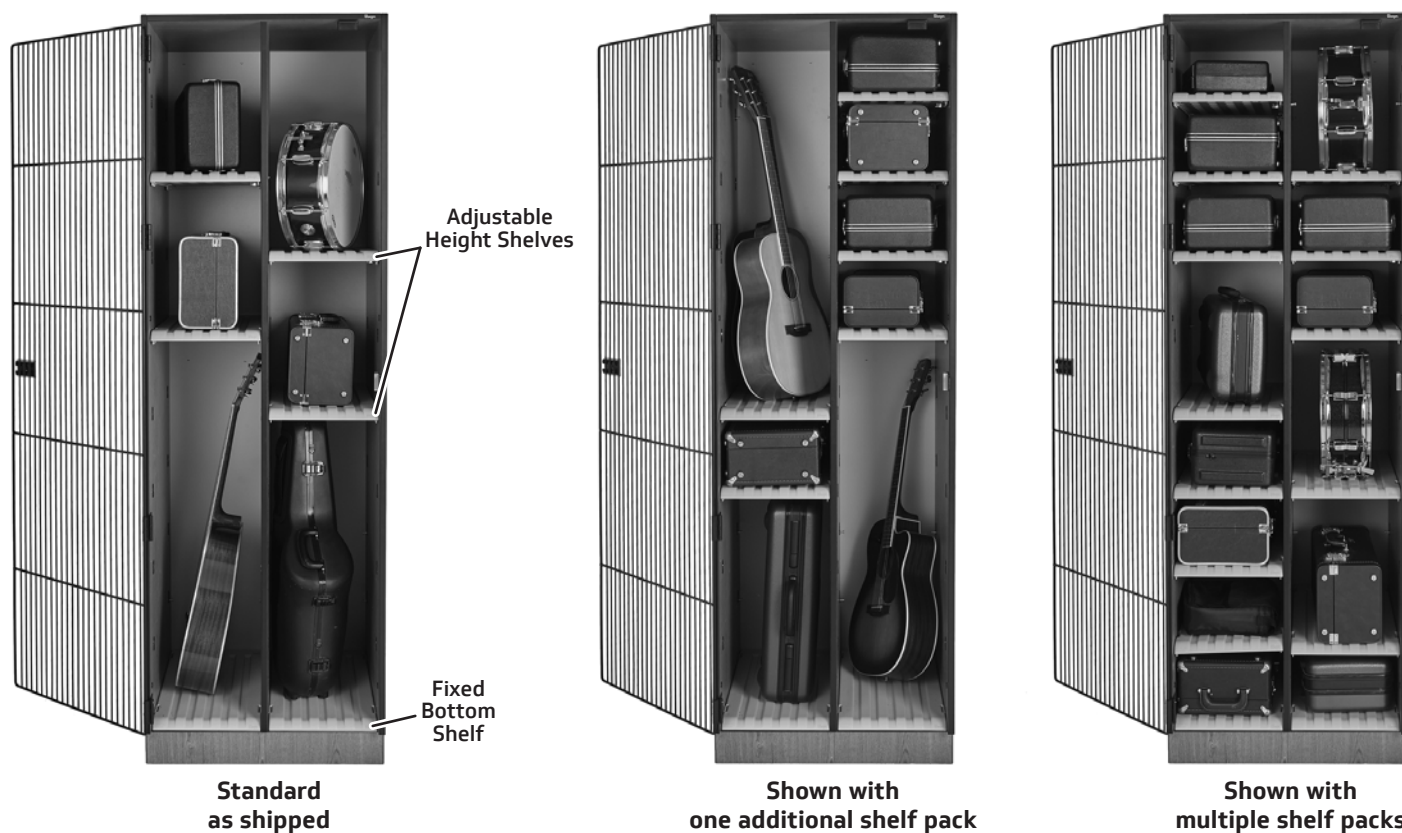
1.0 Clarification Questions and Answers:

Q1 - On drawing A2.01 partial ground floor plan shows 3 Wenger # 76 and 1 Wenger #73. Are these to be included in base bid? There is no mention of these cabinets anywhere else, please advise if they are to be supplied and installed under this tender?

R1 - Yes, these cabinets are to be supplied and installed in the base bid. With adjustable shelves, full grille doors and Wenger Maple laminate finish (see attached).

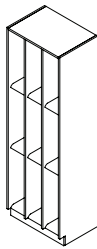
Adjustable Shelf Storage Option

- Offered for Wenger UltraStor® Storage Cabinets and AcoustiCabinets®
- Available in multiple heights and widths in a variety of single, double and triple column configurations
- Each cabinet includes one fixed bottom shelf and two adjustable height shelves per column
Additional shelf packs are available
Each shelf pack will complete one row (one shelf for each column)
 - 84" (2134 mm) tall cabinets can fit up to eight adjustable shelves, creating up to nine compartments in each column
 - 68" (1727 mm) tall cabinets can fit up to six adjustable shelves, creating up to seven compartments in each column
- Patented grooved shelves are blow-molded polyethylene and allow air to circulate
- Patent pending adjustable height shelf uses a swing pin and latch design
- Door options:
 - Full-length wood door - same construction as wall panels
 - Full-length straight grille door - 3/16" (5 mm) diameter welded steel grille construction with powder-coat paint finish
 - Full-length waterfall grille doors - 1/4" (6 mm) diameter welded steel grille construction with powder-coat paint finish
 - No door
- Wall panels are 3/4" (19 mm) thick industrial grade composite wood with no added formaldehyde and polyester laminate finish in Wenger standard colors
- Edging is 1/8" (3 mm) radiused PVC
- Cabinets have four or five adjustable steel leveling glides for uneven floors
- Doors include heavy-duty 5-knuckle institutional ANSI/BHMA A156.9, Grade 1 hinge, through-bolted to cabinet wall
- Lockable doors are designed for padlocks with 3/4" (19 mm) maximum vertical shackle clearance
- Cabinets are shipped fully assembled for widths under 48" (1219 mm)
- UL GREENGUARD Certified - Product certified for low chemical emissions: ul.com/gg - UL 2818
- Ten-year warranty

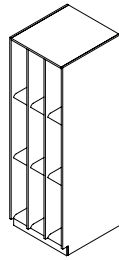


NOTE: Doors must be included at the time of ordering as they can not be installed later.

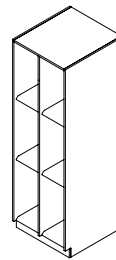
84" (2134 mm) Heights



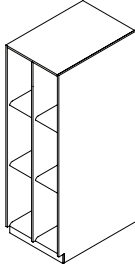
#70
Cabinet size:
 27-1/2" w x 19-1/4" d x 85-5/8" h
 (699 x 489 x 2175 mm)
 282 lb (128 kg)
Narrow cabinet width:
 21-1/2" (546 mm)
Compartment sizes:
 8" w x 17-3/8" d (203 x 441 mm)
Compartment height range:
 7-5/8" to 78-1/8" h (194 to 1984 mm)
Narrow compartment width:
 6" (152 mm)



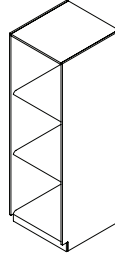
#71
Cabinet size:
 27-1/2" w x 29-1/4" d x 85-5/8" h
 (699 x 743 x 2175 mm)
 367 lb (166 kg)
Narrow cabinet width:
 21-1/2" (546 mm)
Compartment sizes:
 8" w x 27-3/8" d (203 x 695 mm)
Compartment height range:
 7-5/8" to 78-1/8" h (194 to 1984 mm)
Narrow compartment width:
 6" (152 mm)



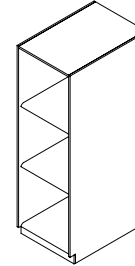
#72
Cabinet size:
 27-1/2" w x 29-1/4" d x 85-5/8" h
 (699 x 743 x 2175 mm)
 313 lb (142 kg)
Narrow cabinet width:
 21-1/2" (546 mm)
Compartment sizes:
 12-3/8" w x 27-3/8" d (314 x 695 mm)
Compartment height range:
 7-5/8" to 78-1/8" h (194 to 1984 mm)
Narrow compartment width:
 9-3/8" (238 mm)



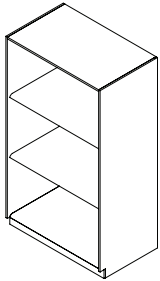
#73
Cabinet size:
 27-1/2" w x 39-1/4" d x 85-5/8" h
 (699 x 997 x 2175 mm)
 383 lb (173 kg)
Narrow cabinet width:
 21-1/2" (546 mm)
Compartment sizes:
 12-3/8" w x 37-3/8" d (314 x 949 mm)
Compartment height range:
 7-5/8" to 78-1/8" h (194 to 1984 mm)
Narrow compartment width:
 9-3/8" (238 mm)



#74
Cabinet size:
 27-1/2" w x 29-1/4" d x 85-5/8" h
 (699 x 743 x 2175 mm)
 248 lb (112 kg)
Narrow cabinet width:
 21-1/2" (546 mm)
Compartment sizes:
 25-1/2" w x 27-3/8" d (648 x 695 mm)
Compartment height range:
 7" to 78-1/8" h (178 to 1984 mm)
Narrow compartment width:
 19-1/2" (495 mm)

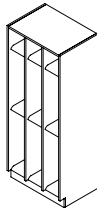


#75
Cabinet size:
 27-1/2" w x 39-1/4" d x 85-5/8" h
 (699 x 997 x 2175 mm)
 297 lb (135 kg)
Narrow cabinet width:
 21-1/2" (546 mm)
Compartment sizes:
 25-1/2" w x 37-3/8" d (648 x 949 mm)
Compartment height range:
 7" to 78-1/8" h (178 to 1984 mm)
Narrow compartment width:
 19-1/2" (495 mm)

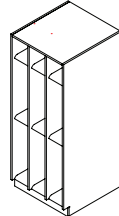


#76
Cabinet size:
 48-1/2" w x 29-1/4" d x 85-5/8" h
 (1232 x 743 x 2175 mm)
 282 lb (105 kg)
Compartment sizes:
 46-1/2" w x 27-3/8" d (1181 x 695 mm)
Compartment height range:
 6-7/16" to 76-3/8" h (164 to 1940 mm)

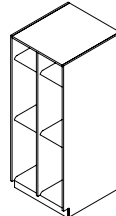
68" (1727 mm) Heights



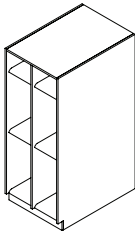
#77
Cabinet size:
 27-1/2" w x 19-1/4" d x 69-3/4" h
 (699 x 489 x 1772 mm)
 315 lb (143 kg)
Narrow cabinet width:
 21-1/2" (546 mm)
Compartment sizes:
 8" w x 17-3/8" d (203 x 441 mm)
Compartment height range:
 7-7/8" to 62-1/4" h (200 to 1581 mm)
Narrow compartment width:
 6" (152 mm)



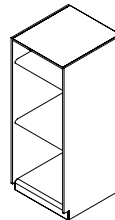
#78
Cabinet size:
 27-1/2" w x 29-1/4" d x 69-3/4" h
 (699 x 743 x 1772 mm)
 299 lb (136 kg)
Narrow cabinet width:
 21-1/2" (546 mm)
Compartment sizes:
 8" w x 27-3/8" d (203 x 695 mm)
Compartment height range:
 7-7/8" to 62-1/4" h (200 to 1581 mm)
Narrow compartment width:
 6" (152 mm)



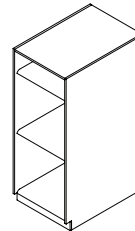
#79
Cabinet size:
 27-1/2" w x 29-1/4" d x 69-3/4" h
 (699 x 743 x 1772 mm)
 256 lb (116 kg)
Narrow cabinet width:
 21-1/2" (546 mm)
Compartment sizes:
 12-3/8" w x 27-3/8" d (314 x 695 mm)
Compartment height range:
 7-7/8" to 62-1/4" h (200 to 1581 mm)
Narrow compartment width:
 9-3/8" (238 mm)



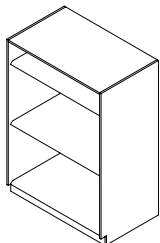
#80
Cabinet size:
 27-1/2" w x 39-1/4" d x 69-3/4" h
 (699 x 997 x 1772 mm)
 302 lb (137 kg)
Narrow cabinet width:
 21-1/2" (546 mm)
Compartment sizes:
 12-3/8" w x 37-3/8" d (314 x 949 mm)
Compartment height range:
 7-7/8" to 62-1/4" h (200 to 1581 mm)
Narrow compartment width:
 9-3/8" (238 mm)



#81
Cabinet size:
 27-1/2" w x 29-1/4" d x 69-3/4" h
 (699 x 743 x 1772 mm)
 195 lb (88 kg)
Narrow cabinet width:
 21-1/2" (546 mm)
Compartment sizes:
 25-1/2" w x 27-3/8" d (648 x 695 mm)
Compartment height range:
 7-7/8" to 62-1/4" h (200 to 1581 mm)
Narrow compartment width:
 19-1/2" (495 mm)



#82
Cabinet size:
 27-1/2" w x 39-1/4" d x 69-3/4" h
 (699 x 997 x 1772 mm)
 242 lb (110 kg)
Narrow cabinet width:
 21-1/2" (546 mm)
Compartment sizes:
 25-1/2" w x 37-3/8" d (648 x 949 mm)
Compartment height range:
 7-5/16" to 62-1/4" h (186 to 1581 mm)
Narrow compartment width:
 19-1/2" (495 mm)



#83
Cabinet size:
 48-1/2" w x 29-1/4" d x 69-3/4" h
 (1232 x 743 x 1772 mm)
 206 lb (94 kg)
Compartment sizes:
 46-1/2" w x 27-3/8" d (1181 x 695 mm)
Compartment height range:
 6-7/16" to 60-1/2" h (164 to 1537 mm)

Standard Compartment Sizes are shown without doors



© 2024 Wenger Corporation
 USA/2024-03

Minnesota Location Wenger Phone 800.4WENGER (493-6437) Wenger Worldwide +1.507.455.4100 | Parts & Service 800.887.7145 | wengercorp.com
 GearBoss Phone 800.493.6437 | gearboss.com
 555 Park Drive, PO Box 448 | Owatonna | MN 55060

New York Location J.R. Clancy Phone 800.836.1885 JR Clancy Worldwide +1.315.451.3440 | jrclancy.com | 7041 Interstate Island Road | Syracuse | NY 13209